

BELVOIR!

Property is personal

£147,500

Ash Court

Rugby, CV22 6EL

PROPERTY SUMMARY

This is a nicely presented and good sized 2 bedroom ground floor apartment in the popular Ash Court development, tucked away in a leafy part of Rugby.

It is sold without chain and consists of a living room overlooking gardens, separate kitchen, two bedrooms and a bathroom. There is also a store room / boiler room / utility area adjacent to the main apartment.

This is a LEASEHOLD property. The owner advises that 93 years remain on the lease and total annual charges are just under £1250.

2



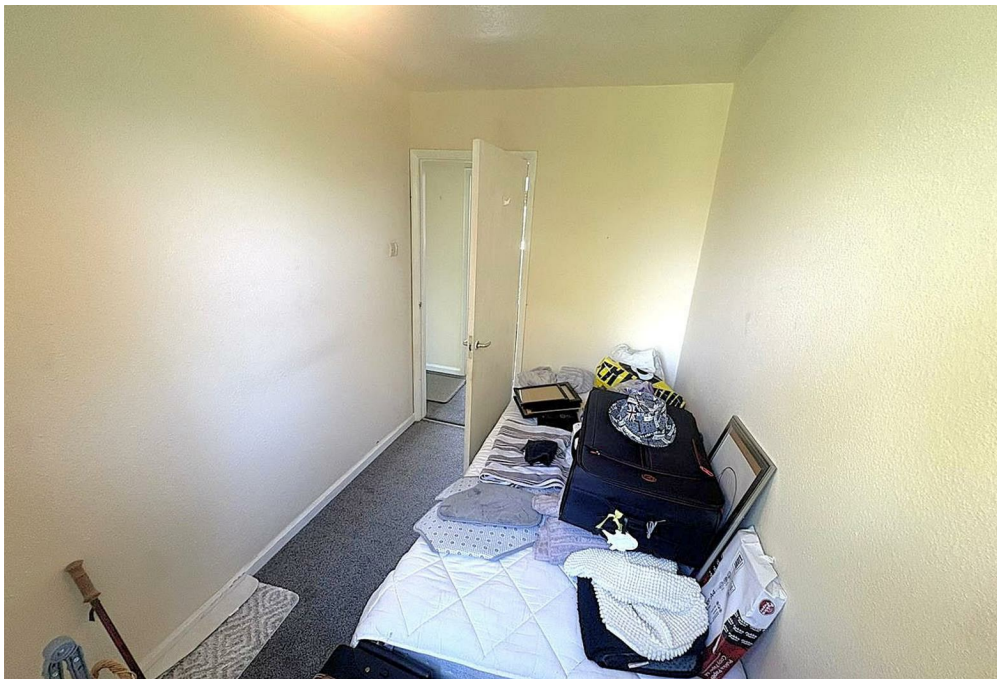
1



2

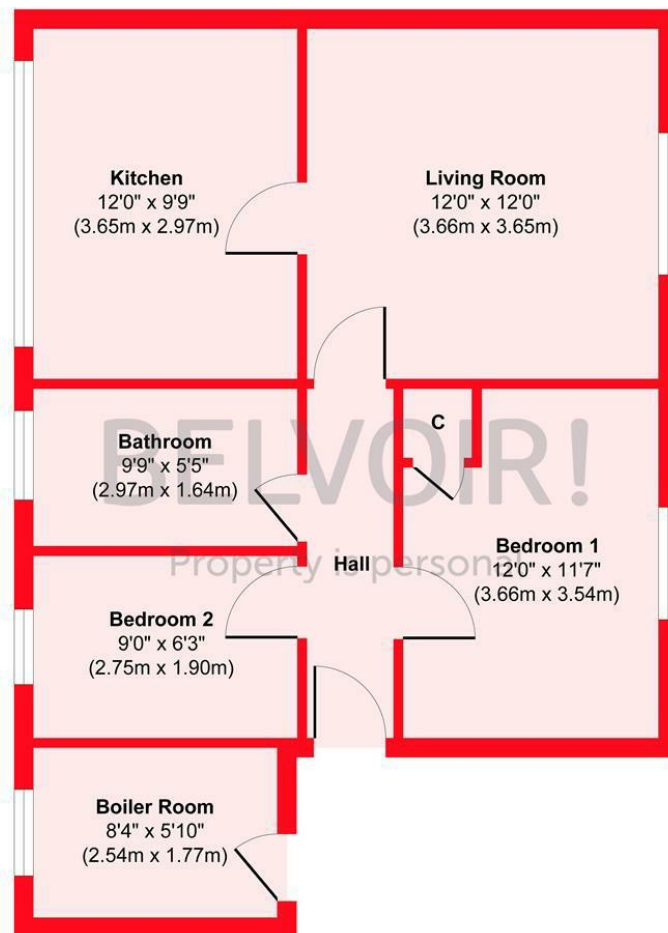








Ash Court, CV22



Floor Plan

Approx. Gross Internal Floor Area 568 sq. ft / 52.85 sq. m

Illustration for identification purposes only, measurements are approximate, not to scale.

Produced by Elements Property

LOCAL AUTHORITY

Rugby

TENURE

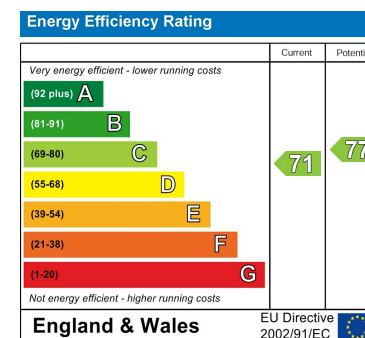
Leasehold

COUNCIL TAX BAND

B

VIEWINGS

By prior appointment only



Agents Note: Whilst every care has been taken to prepare these particulars, they are for guidance purposes only. All measurements are approximate and are for general guidance purposes only and whilst every care has been taken to ensure their accuracy, they should not be relied upon and potential buyers/tenants are advised to recheck the measurements

BELVOIR!

Property is personal

OFFICE ADDRESS

East Hunsbury Local Centre Butts
Road
Northampton
Northamptonshire
NN4 0UE

OFFICE DETAILS

01604 701701
northampton@belvoir.co.uk
www.belvoirnorthampton.com